



BIOSPHERA

The Natural Vision



Specialities



DIGEST Go	pag. 4
HYDRO Drink.....	pag. 6
MINERAL Liquid.....	pag. 7
PROVIGOR.....	pag. 8
OPEN Air.....	pag. 10
SALIC Up.....	pag. 12
ACID Extra.....	pag. 14
ACID Complete.....	pag. 15
VITA ADE.....	pag. 16
VITA SEL E.....	pag. 12
ACID Extra.....	pag. 17
VITA Complete.....	pag. 18
VITA B Plus.....	pag. 19
MYCOTOXINE Line.....	pag. 20

DIGEST Go

The purpose of the digestive process is to transform food into energy and performances **DIGEST GO**, thanks to a skillful combination of herbal extracts and yeast, stimulates the enzymatic and digestive activity, starting from salivation and mastication till an optimal intestinal absorption.

Efficient digestion means healthier animals, more growth, more profit.

• • • **NATURAL ACTIVE INGREDIENTS** • • •

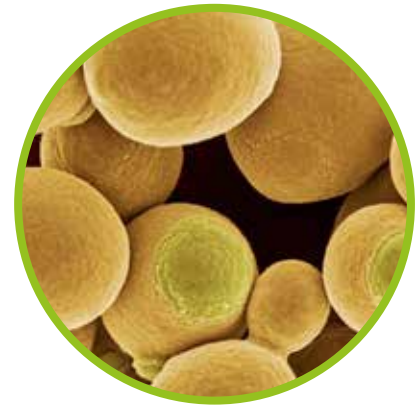
CARVACROL



THYMOL



Yeast extract from SACCHAROMYCES CEREVISIAE



In the direction of preservation of the best animal health DIGEST GO is also addressed to the protection of intestine from pathogenic agents.

The essential oils **CARVACROL** and **THYMOL** synergistically operate as antiseptics and antimicrobials creating an environment suitable for the developing of the proper bacterial flora, with an immune system more efficient in an organism not run down by inflammation processes.

Essential oils with an antibacterial character generally contain a higher percentage of phenolic compounds, such as carvacrol and thymol, main components of plants such as oregano and thyme.

- Improves the PALATABILITY of feed.
- Improves the IMMUNE SYSTEM of animals.
- Improves the RUMEN and the INTESTINAL FLORA.
- Improves the DIGESTION PROCESS.
- Improves the OVERALL APPEARANCE of the animal, especially skin, hair and nails.

• • • INFORMATION • • •

Indications:

- improves absorption of minerals (Ca, Mg, etc.) in the large intestine
- stimulates the immune system
- Liverprotector
- Choeleretic

Additives per liter:

Yeast extract from *Saccharomyces Cerevisiae*, yeast cell wall from *Sacch. Cerevisiae*, Carvacrol, Thymol.

Excipients:

water: up to 1 liter

Recommended dosage:

Mix carefully and according to the good manufacturing procedures with the following dosages:

Poultry: 1 liter / 1.000 liters of drinking water
Sheep and goats: 5-10 ml/head/day
Cattle and camel: 20-50 ml/head/day

Shake well before to use. Always close the packaging after use. To stock in a dry, cool and clean environment, away from direct sunlight. Do not freeze.

Packaging:

- **Bottle:** 1 liter
 - **Tanks:** 5-10-25-200 liters
-

HYDRO Drink



*HYDRO DRINK is a premix extremely palatable and tasty.
It provides chelated (glycinates) trace elements with high bioavailability and rapid absorption*

*HYDRO DRINK allows to reach a perfect equilibrium of minerals.
The choice of high available source of these minerals assures the highest enzymatic action
and a optimal protein synthesis.*

- Zinc: essential for the metabolism of carbohydrates, lipids and protein, it has influence on reproductive performances and immunity
- Glycine: it acts as neurotransmitter in the central nervous system; exerts a moisturizing action and is a precursor of creatine

• • • INFORMATION • • •

Indications:

Improves energy metabolism
Improves the electrolyte balance
It protects from the action of free radicals

Additives per liter:

Zinc chelate of glycine,
hydrate (Zinc 1.000 mg),
Citric Acid, L-Glycine

Excipients:

Sodium chloride,
Potassium chloride,
Magnesium chloride
Water up to 1 liter

Recommended dosage:

Mix carefully and according to the good manufacturing procedures to the other components of the diets with the following dosages: 1 - 1,5 liters / 1000 liter of drinking water

Do not exceed the limits of Zinc with the use of other ingredient.

Close the bottle after the usage. Keep in a fresh and dry place, away from direct sunlight or heat sources. Do not freeze

Packaging:

- **Bottle:** 1 liter
- **Tanks:** 5-10-25 and 200 liters

MINERAL Liquid



MINERAL Liquid is a liquid complementary feedstuff for all animal specie specifically formulated to supply high bio-available and readily absorbable chelated (glycinates) trace-elements with

- Iron: is the most important constituent of hemoglobin and myoglobin and is part of important enzymes catalysis ox-redox reactions
- Copper: is part of a wide series of enzymes and is part of the myelin sheath
- Zinc: essential for the metabolism of carbohydrates, lipids and protein. It has influence on reproductive performances and immunity

All the chelated trace-elements (particularly glycinates) are better and quickly absorbed than oxide or sulphate trace-elements. They do not oxidize vitamins or essential oil like oxide or sulphate trace-elements

• • • INFORMATION • • •

Indications:

- Improve the immunity system
- Improve the fertility
- Improve the animal metabolism and the enzymatic activity
- Improve the mineral metabolism
- Help animals under stress (climatic changes, heat stress, illness, birth)

Additives per liter:

Iron chelate of glycine, hydrate (E1)
(Iron 3700 mg), Copper chelate of glycine, hydrate (Copper 500 mg),
Zinc chelate of glycine, hydrate (E6)
(Zinc 3.300 mg).

Excipients:

Water up to 1 liter

Recommended dosage:

- Poultry: 2-4 liters per 1.000 liters of drinking water
- Hens: 2-4 liters per 1.000 liters of drinking water before and during the mute
- Dairy cow: 20-30 ml/head/day one month before birth and 15 days after birth
- Beef cattle: 15-25 ml/head/day during the weaning and when the animals arrive in the farm. 45 days before slaughter

The product contains copper, verify that the presence in other sources doesn't exceed the limits for the single species.

Do not use in sheep and goats.

Shake before use. Close the bottle after the usage. Keep in a fresh and dry place, away from direct sunlight or heat sources.

Do not freeze.

Packaging:

- **Bottle:** 1 liter
- **Tanks:** 5-10-25 and 200 liters

PROVIGOR

The liver is the most important organ to indicate the wellness state of the animals. **PROVIGOR** is a premix with potent liver protective properties and recovery capacity of damaged liver tissue. **PROVIGOR** has been made with ingredients widely recognized by the scientific community for their activity. Has been formulated

• • • NATURAL ACTIVE INGREDIENTS • • •

ARTICHOKE extract



ARTICHOKE extract: Therapeutically, artichoke extract has been used since 14 century in medical sciences for the treatment of cholestolemia, triglyceridemia and has hepatoprotective properties (*Brand et al., 1992; Zargari, 2003*). Artichoke extract has protective activity in liver.

Extract from **CARDUS MARIANUS**



CARDUS MARIANUM extract (*Silybum marianum*): Silymarin is a complex of flavonolignane: silychristin, silydianin, silybin and isosilybin. Silybin, in the form of soluble diemisuccinate, is also used in antipoison centre as an injectable treatment for *Amanita phalloides* intoxications. (*Desplaces et al. 1975; Choppin and Desplaces 1978*) Silymarin have shown anti-inflammatory and anticarcinogenic properties in liver tissue acting on immune system modulation. (*Dehmlow et al. 1996; De la puerta et al. 1996; Luper 1998*).

••• NATURAL ACTIVE INGREDIENTS •••

ECHINACEA ANGUSTIFOLIA



ECHINACEA ANGUSTIFOLIA: the American Indians used preparations based on this plant to treat or prevent certain diseases (especially those of the respiratory tract) but also to disinfect the wounds.

The properties of echinacea are given by its numerous active ingredients: alcamides, cetoalkenes, cioric acid, polysaccharides, flavonoids and essential oil.

The alcamids play an important anti-inflammatory action.

Several scientific studies have confirmed that echinacea extracts stimulate the immune system, increasing the activation of macrophages.

ORTICA



ORTICA: Nettle has remineralizing, diuretic, antirheumatic, antioxidant, antimicrobial, anti-ulcer, astringent and analgesic properties.

Nettle can stimulate digestion and absorption of birdfood.

It is a natural supplier of important mineral salts (silicon, phosphorus, manganese, calcium, potassium, magnesium), vitamins A, C and K, iron and chlorophyll. Diuretic action of nettle facilitates the elimination of bacteria responsible for urinary infections.

••• INFORMATION •••

Indications:

Potent hepatoprotective properties and recovery capacity of damaged liver tissue

Additives per liter:

Artichoke extract, Extract from Cardus Marianus (Silybum marianum), Echinacea Angustifolia, nettle extract.

Excipients:

Monopropyle glycol , water up to 1 liter

Recommended dosage:

Mix carefully and according to the good manufacturing procedures with the following dosages:

Poultry: 1 liter / 1.000 liters of drinking water

Sheep and goats: 5-10 ml/head/day

Cattle and camel: 20-50 ml/head/day

Shake well before to use. Always close the packaging after use. To stock in a dry, cool and clean environment, away from direct sunlight. Do not freeze.

Packaging:

• **Bottle:** 1 liter

• **Tanks:** 5-10-25-200 liters

OPEN Air

OPEN AIR is a premix for poultry formulated to exploit the synergy between fatty acids and essential oils. The combination of active ingredients supplies to the animals, subjected to the strong stresses of the intensive breeding, the capacity to resist to the pathogenic challenges and to maintain a better health status with better productive performances. Each ingredient has a wide number of activity that can have positive influence on the digestive system, respiratory apparatus and also immune system.

MCFA are a group of medium-chain fatty acids with a number of carbon atoms ranging from C6 to C12. They are: caproic acid, caprylic acid, capric acid, **LAURIC ACID**.

Medium chain fatty acids are commonly used in feeding, especially because of their anti-bacterial properties against Gram-positive bacteria. (Clostridia, Staphylococcus, Streptococcus).

• • • NATURAL ACTIVE INGREDIENTS • • •



EUCALYPTOL and MENTHOL



EUCALYPTOL and **MENTHOL** for the prevention and the treatment of respiratory disorders. Eucalyptol, being balsamic, expectorant and fluidifying, is efficiently active in maintaining free the respiratory tract.

In its activity is supported by the pairing with Menthol that, besides to be balsamic and fluidizer, is also antispasmodic on the smooth musculature of the respiratory and digestive system.

The alcoholic constituent of peppermint oil, namely the menthol, acts as a local anesthetic and disinfectant.

Inhaled menthol alleviates laryngitis and bronchitis.

Eucalyptus oils have anti-inflammatory, antibacterial, antiviral and antifungal activities.

They inhibit the cyclo-oxygenase, the main enzyme in the prostaglandin pathway, and thus exhibit an anti-inflammatory property; moreover, they have a cough inhibiting effect.

••• NATURAL ACTIVE INGREDIENTS •••

Oils CARVACROL and THYMOL



In the direction of preservation of the best animal health OPEN AIR is also addressed to the protection of intestine from pathogenic agents.

The essential oils **CARVACROL** and **THYMOL** synergistically operate as antiseptics and antimicrobials creating an environment suitable for the developing of the proper bacterial flora, with an immune system more efficient in an organism not run down by inflammation processes.

Essential oils with an antibacterial character generally contain a higher percentage of phenolic compounds, such as carvacrol and thymol, main components of plants such as oregano and thyme.

CINNAMIC ALDEHYDE



All the effects are boosted and completed by the presence in OPEN AIR of **CINNAMIC ALDEHYDE**. An essential oil extracted by cinnamon, that has an antioxidative effect able to reduce the cellular stress and the level of detrimental inflammation states. Cinnamic Aldehyde has an antibacterial activity too.

After 72 hours of incubation showed inhibitory properties on the growth of all pathogenic. The colonies of S.aureus and B.cereus in the Sulgidduk containing cinnamon powder were significantly lower than the control.

••• INFORMATION •••

Indications:

- Improves respiration and air passage.
- Reduces Mucus accumulation and discharge out of respiratory cavities.
- Reduces the negative effects of causing disease as well as quick recovery.
- Reduces stress and loss of valuable feed intake.
- Improves resistance to all respiratory infections.
- Reduces the negative effect and stress due to live vaccination.
- Improves survivability and reduces mortality.

Additives per liter:

Carvacrol, Eucalyptol, Menthol, Cinnamic Aldehyde, Thymol, Lauric Acid

Excipients:

Monopropyle Glycol up to 1 liter

Recommended dosage:

Mix carefully and according to the good manufacturing procedures with the following dosages:

- Broilers and Turkeys in stress condition: 200 ml /1.000 liters of drinking water per 5-6 days
- Prevention for Broilers: 100-150 ml /1.000 liters of drinking water per 4-5 days
- Prevention for Layers: 80-100 ml / 1.000 liters of drinking water twice daily

Shake well before to use. Always close the packaging after use. To stock in a dry, cool and clean environment, away from direct sunlight. Do not freeze.

Packaging:

- **Bottle:** 1 liter
- **Tanks:** 5-10-25-200 and 1.000 liters

SALIC Up

The inflammatory state is the cause and the symptom of numerous clinical and subclinical problems. SALIC UP is a concentrate of extracts, with marked anti-inflammatory and antipyretic activity, which act in a synergistic way. The active ingredients, totally of vegetable origin in glycolic suspension, guarantee total safety of use.

• • • NATURAL ACTIVE INGREDIENTS • • •

ECHINACEA ANGUSTIFOLIA



ECHINACEA ANGUSTIFOLIA: the American Indians used preparations based on this plant to treat or prevent certain diseases (especially those of the respiratory tract) but also to disinfect the wounds.

They did not know that among the most interesting properties of Echinacea there was the ability to act positively on the body's immune defenses.

The properties of echinacea are given by its numerous active ingredients: alcamides, cetoalkenes, cicoric acid, polysaccharides, flavonoids and essential oil.

The alcamids play an important anti-inflammatory action.

Several scientific studies have confirmed that echinacea extracts stimulate the immune system, increasing the activation of macrophages.

TARASSACO



TARAXACUM (Dandelion): is rich in calcium, which is essential for the growth and strength of bones. It is also rich in antioxidants like vitamin C and luteolin, which protect bones from age-related damage.

Dandelions are highly diuretic in nature, so they help eliminate deposits of toxic substances in the kidneys and the urinary tract. The disinfectant properties of dandelions also inhibit microbial growth in the urinary system.

••• NATURAL ACTIVE INGREDIENTS •••

SPIREA ULMARIA



SPIREA ULMARIA: antipyretic and anti-inflammatory action due to the presence of salicylates having effect of inhibition of 15-lipoxygenase, tannins, flavonoids.

Bourgoyne: Salycicates in Herbs. - Modern Phytotherapy.

1995; 1:3-6 Halkes Beukelman Kroes : In vitro immunomodulatory activity of Filipendula U. - Proceedings of NHAA International Conference; 1998 Sydney, Australia Bradley: Bournemouth: British Herbal Medicine Association, Scientific Committee. 1992; 158-159.

WHITE WILLOW BARK



WHITE WILLOW BARK: has been used throughout the world as an antipyretic and analgesic.

••• INFORMATION •••

Indications:

anti-inflammatory, antidiarrheal, anti-pyretic action

Additives per liter:

Echinacea Angustifolia fluid extract, Spirea Ulmaria dry extract, Salix (white willow bark) dry extract, taraxacum (Dandelion) dry extract.

Excipients:

Monopropylen glycol , water up to 1 liter

Recommended dosage:

Mix carefully and according to the good manufacturing procedures with the following dosages:

Poultry: 1 liter / 1.000 liters of drinking water

Sheep and goats: 5-10 ml/head/day

Cattle and camel: 20-50 ml/head/day

Shake well before to use. Always close the packaging after use. To stock in a dry, cool and clean environment, away from direct sunlight. Do not freeze.

Packaging:

• **Bottle:** 1 liter

• **Tanks:** 5-10-25-200 liters

ACID Extra



ACID EXTRA is a liquid acidifying premix, very concentrated, based on Formic acid and Propionic acid in combination with Ammonium formate.

The product has been formulated with the intent of control salmonella and pathogenic bacteria via feed and via drinking water.

ACID EXTRA has been formulated to decrease the concentration of pathogens and to reduce the possibility of re-contamination of drinking water.

Using a mix of Formic and Phosphoric acid, it is possible to decrease the pH at lower level than with single acids.

ACID EXTRA reduce the pH letting the formic acid free to act against pathogens.

To prevent bacterial proliferation (i.e. Salmonella) the water pH should have a pH around 4.

The activity of ACID EXTRA is related to ability of the un-dissociated form of the acids, to cross the bacterial membrane and enter into the cell, where the dissociation happen, releasing protons and anions.

The protons decrease the cellular pH and modify the standard equilibrium. To restore the acid-base ratio, the bacterial cell is forced to use energy that is no longer available for the standard metabolism.

Anions on the other side, inhibits DNA synthesis and together with the cations are responsible for the reduction of bacterial multiplication.

Tests have shown that ACID EXTRA works well against Salmonella, E.Coli and Campylobacter both in finished feed that in raw materials.

Lowering the pH in feed and water helps the poultry to deal with the passage between the weaning and fattening period.

• • • INFORMATION • • •

Indications:

- Prevents the proliferation of pathogenic bacteria such as Salmonella, E.Coli and Campylobacter in feed and machinery
- Prevents the secondary contamination of the feed following heat treatments
- Acts as acidifier of gastro-intestinal tract of animals

Additives per liter:

Formic acid , Ammonium formiate, Propionic acid

Excipients:

Monopropylene Glycol, Water up to 1 liter

Recommended dosage:

Dose depends on contamination concentration of water, type of water and state of feed.

Maintenance Dose: 1 litre / 2000 - 3000 litres water for 4-5 days.

Curative Dose: 1 litre / 1000 litres water to maintain water pH up to 4.

Packaging:

- **Bottle:** 1 liter
- **Tanks:** 5-10-25-200 and 1.000 liters

ACID Complete

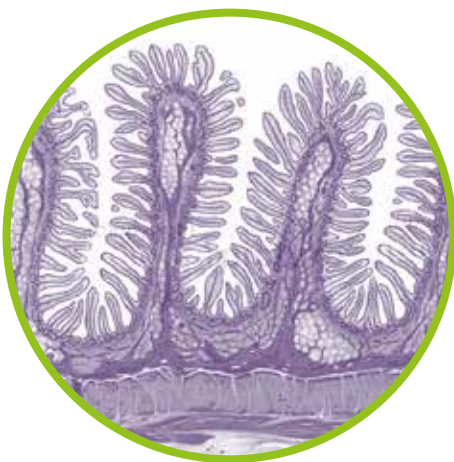


The target of the formulation of **ACID COMPLETE** is to create a synergistic effect between the acids in the intestine. **SCFA** are a group of **short-chain fatty acids** with a number of carbon atoms ranging from C1 to C4.

They are: **Formic Acid, Acetic Acid, Propionic Acid, Butyric Acid, Lactic Acid and Succinic Acid.** They are saturated fatty acids.

The fiber, representing the substrate for the synthesis of short chain fatty acids, stimulates the proliferation of bacterial flora at the expense of pathogenic bacteria and their toxic metabolites.

Butyric acid is the major source of energy for the colon cells and is involved in maintaining mucous health (butyrhins deficiency leads to mucosal atrophy)



Butyric acid also has a big impact on the immune system. its anti-inflammatory mechanism is related to its ability to regulate the action of cytokines responsible for the inflammation itself.

Short chain fatty acids (SCFA) are commonly used in feeding, especially because of their anti-bacterial properties against Gram-negative bacteria (Salmonella, E. Coli, Campylobacter) SCFA are able to penetrate the thin layer of peptido-glycans in the cell walls of Gram-negative bacteria.

Formic Acid acts indirectly reducing the pH of the feed but also in a direct way thanks to the specific antimicrobial activity of the formate. the un-dissociated form of the acids, to cross the bacterial membrane and enter into the cell, where the dissociation happen, releasing protons and anions.

The protons decrease the cellular pH and modify the standard equilibrium. To restore the acid-base ratio, the bacterial cell is forced to use energy that is no longer available for the standard metabolism.

• • • INFORMATION • • •

Indications:

- Prevents the proliferation of pathogenic bacteria (Salmonella, E. Coli, Campylobacter)
- Prevents the contamination of healthy ingredients when processed in contaminated plants/structures
- Behaves as acidifiers in the gastrointestinal tract
- Stimulates the animal's welfare through a trophic actions on the intestinal villus

Additives per liter:

Lactic acid, Phosphoric acid, Citric acid, Formic acid, Propionic acid, Acetic acid, Mono-diglycerides of butyric acid, Glycerine

Recommended dosage:

Mix carefully and according to the good manufacturing procedures with the following dosages: 1 liter/2000-3000 liters of drinking water.

Packaging:

- **Bottle:** 1 liter
- **Tanks:** 5-10-25-200 and 1.000 liters

VITA Ade



VITA ADE is an emulsified premix for feed to be used as integration for all animal species and categories. It provides the following active ingredients:

- *Vitamin A: Essential for epithelium integrity, the growth and the protein anabolism and fertility*
- *Vitamin D3: it can improve the intestinal absorption rate of Calcium and Phosphorous and fix these minerals into the bones*
- *Vitamin E: protect cellular membranes and epithelia, boost the production of antibodies, acts on muscular and nervous tropism, improves immunity and fertility*

• • • INFORMATION • • •

Indications:

- To be use in all cases it is necessary to add fat-soluble vitamins.
- Anti-stress supplement.
- Increases growth.
- Better egg production and stronger shells

Additives per liter:

Vitamin A 100.000.000 UI, Vitamin D3 20.000.000 UI, Vitamin. E 20.000 mg.

Excipients:

Monoprpylene glycol, Water up to 1 liter

Recommended dosage:

Mix carefully and according to the good manufacturing procedures with the following dosages:

- Poultry: 1 ml/10 liters of drinking water for 3-5 consecutive days
- Sheep and goats: 0.2-0.5 ml/head/day for 5-10 consecutive days
- Cattle and camel: 1-2 ml/head/day for 7-14 consecutive days

Shake well before to use. Always close the packaging after use. To stock in a dry, cool and clean environment, away from direct sunlight. Do not freeze..

Packaging:

- **Bottle:** 1 liter
- **Tanks:** 5-10-25-200 liters

VITA Sel E



VITA SEL E is an emulsified premix for feed to be used as integration for all animal species and categories.

It supplies the following active ingredients:

- *Vitamin E: protect cellular membranes and epithelia, boost the production of antibodies, acts on muscular and nervous trophism, improves immunity and fertility.*
- *Selenium: is one of the main components of the enzyme glutathione peroxidase that, together with Vitamin E, protects the phospholipids from ox-redox reactions*

• • • INFORMATION • • •

Indications:

To support metabolism antioxidant of animals

Indications:

Vitamin. E 200.000 mg, Selenium (Sodium selenite) 200 mg

Indications:

Monoprpylene glycol, Water up to 1 liter

Recommended dosage:

Mix carefully and according to the good manufacturing procedures with the following dosages:

- Poultry: 100 ml/1.000 liters of drinking water
- Sheep and goats: 2-6 ml/head/day
- Cattle and camel: 10-15 ml /head/day

Shake well before to use. Always close the packaging after use. To stock in a dry, cool and clean environment, away from direct sunlight. Do not freeze.

Indications:

- Bottle: 1 liter
- Tanks: 5-10-25-200 liters

VITA Complete



VITA COMPLETE is a premix for feed to be used as integration for all animal species and categories. It supplies the following active ingredients:

- **Vitamin A:** Essential for epithelium integrity, the growth and the protein anabolism and fertility
- **Vitamin D3:** it can modify the intestinal absorption rate of Calcium and phosphorous and fix these minerals into the bones
- **Vitamin E:** protect cellular membranes and epithelia, boost the production of antibodies, acts on muscular and nervous trophism, improves immunity and fertility
- **Vitamin K3:** Is a lipophilic vitamin that at hepatic level, allow the synthesis of prothrombin (one of the main clot factors in blood)
- **Vitamin B1:** is essential in carbohydrates' metabolism and is also part of a wide range of coenzymes
- **Vitamin B2:** is a coenzymes of several ox-redox processes and participates to the metabolism of amino-acids
- **Vitamin B6:** is one of the main component of enzymes which degrade the fatty acids and amino-acids. It is crucial in collagen and nervous central system
- **Vitamin B12:** is the coenzyme of several biochemical reactions among which are extremely important the synthesis of methionine and choline, metabolism of lipids, sugars and protein, in development and maturation of red blood cells
- **Niacinamide (Vit. PP):** is part of coenzymes NAD and NADP which are essentials for metabolism of carbohydrates and lipids with. It has also a relaxing effect on animals (if provided in high dosage)
- **Calcium D-pantothenate:** enter in the Acetyl coenzyme A, participate to the transportation of carboxylic acids, acetylation of choline and it is a precursor of cholesterol and steroidal hormones
- **Betaine:** contributes to osmotic regulation supporting the organism to cope against dehydration especially in summer time, improve the utilization of protein and energy supporting the liver functions.
- **Folic acid:** synergistically with Vitamin B1 work to the synthesis of RNA and DNA, is involved in the metabolism of amino acids and is essential for fertility

• • • INFORMATION • • •

Indications:

Dietary supplements. In phase of reproduction, heat stress, growth and fattening

Additives per liter:

Vitamin A 15.000.000 UI, Vitamina D3 400.000 UI, Vitamin E 8.000 mg, Vitamina K3 1.000 mg, Vitamin B1 1.800 mg, Vitamin B2 1.300 mg, Vitamin B6 800 mg, Vitamin B12 12 mg, Niacinamide 12.500 mg, Betaine 10.000 mg, Calcium D-pantothenate 5.000 mg, Folic acid 250 mg.

Excipients:

Brewery yeast from hydrolyzed Saccharomyces Cerevisiae, water up to 1 liter

Recommended dosage:

Mix carefully and according to the good manufacturing procedures with the following dosages:

- Poultry: 1 liter / 4.000 liters of drinking water
- Sheep and goats: 1 ml/head/day
- Cattle and camel: 4-8 ml /head/day

Shake well before to use. Always close the packaging after use. To stock in a dry, cool and clean environment, away from direct sunlight. Do not freeze.

Packaging:

- Bottle: 1 liter
- Tanks: 5-10-25-200 liters

VITA B Plus



VITA B PLUS is a liquid premix that can be used in all animal species and categories. It supplies the following active ingredients:

- **Vitamin B1:** is essential in carbohydrates' metabolism and is also part of a wide range of coenzymes
- **Vitamin B2:** is a coenzymes of several ox-redox processes and participates to the metabolism of amino-acids
- **Vitamin B6:** is one of the main component of enzymes which degrade the fatty acids and amino-acids. It is crucial in collagen and nervous central system
- **Vitamin B12:** is the coenzyme of several biochemical reactions among which are extremely important the synthesis of methionine and choline, metabolism of lipids, sugars and protein, in development and maturation of red blood cells
- **Niacinamide (Vit. PP):** is part of coenzymes NAD and NADP which are essentials for metabolism of carbohydrates and lipids with. It has also a relaxing effect on animals (if provided in high dosage)
- **Calcium D-pantothenate:** enter in the Acetyl coenzyme A, participate to the transportation of carboxylic acids, acetylation of choline and it is a precursor of cholesterol and steroidal hormones
- **Carnitine:** is essential to the production of energy from fat improving reproductive performances, milk production and muscular development

• • • INFORMATION • • •

Indications:

Dietary supplements. In case of deficiency of vitamin B complex. After vaccination, heat stress and changing season Better fertility.

Additives per liter:

Vitamin B1 3.500 mg, Vitamin B2 1.250 mg,
Vitamin B6 5.200 mg, Vitamin B12 10 mg,
Niacinamide 20.000 mg,
Calcium D-pantothenate 1.000 mg,
L-Carnitine 1.000 mg, L-Lisine 15.000 mg,
DL-Methionine 15.000 mg.

Excipients:

Water up to 1 liter

Recommended dosage:

Mix carefully and according to the good manufacturing procedures with the following dosages:

- Poultry: 1 liter for 2-3000 liters of drinking water
- Sheep and goats: 3-6 ml /head/day
- Cattle and camel: 15-40 ml/head/day

Shake well before to use. Always close the packaging after use. To stock in a dry, cool and clean environment, away from direct sunlight. Do not freeze.

Shake well before to use. Always close the packaging after use. To stock in a dry, cool and clean environment, away from direct sunlight. Do not freeze.

Packaging:

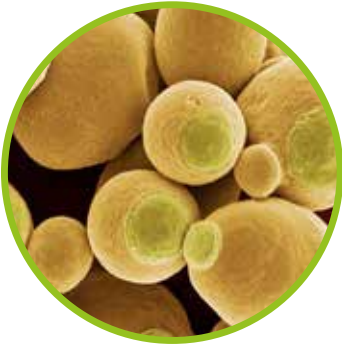
- Bottle: 1 liter
- Tanks: 5-10-25-200 liters

MYCOTOXINE Line



Specific adsorbents with a broad spectrum of action
 Complementary feed for poultry, layers and ruminants
 Against: Aflatoxin, Zearalenon, Deoxynivalenol, Fumonisin

SACCHAROMYCES CEREVISIAE CELL WALLS



KAOLIN CLAY

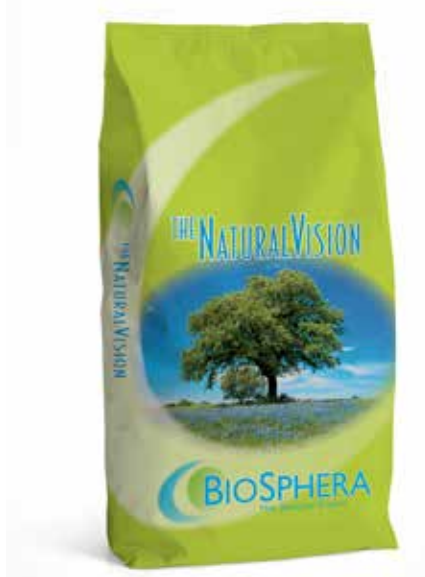


KIESELGUR (purified diatomaceous ground)



DETOX STAR

- **ADDITIVES (per liter):**
 Dried Cell Wall of
 Saccharomyces cerevisiae.....150.000 mg
 Formic acid (85%).....90.000 mg
 Orthophosphoric acid(75%).....50.000 mg
 Vitamin B1.....2.000 mg
 Vitamin B2.....1.400 mg
 Vitamin B3.....2.000 mg
- **Composition:** water
- **Use indication:**
 1-3 liters per 1000 liters
 of drinking water.



DETOX PLUS

- **ADDITIVES (per kg)**
 Bentonite - Montmorillonit.....700.000 mg
 Dried cell Wall
 of Saccharomyces cerevisia.....300.000 mg
- **Use indication:**
 Use in case of suspected or confirmed
 contamination by mycotoxins
 Layers.....1-3 Kg/Ton
 Broilers.....1-4 Kg/Ton
 Beef cattle.....20-40 g/head/day or 3-5 kg/Ton
 Dairy cows.....40-70 g/head/day or 5-8 kg/Ton



DETOX

- **ADDITIVES (per kg):**
 Natrolite-phonolite (E566).....300.000 mg
 Clinoptinolite (1g568).....430.000 mg
 Bentonite (1m558).....250.000 mg
 Saccharomyces cerevisiae
 cell walls20.000 mg
- **Use indication:**
 Mix to the other components of the feed at
 the rate of 0.5 -2 .0 Kg / Mt of finished feed





Biosphera Sp. z o.o.

ul. Cietrzewia 23 - 02-492 Warszawa Poland